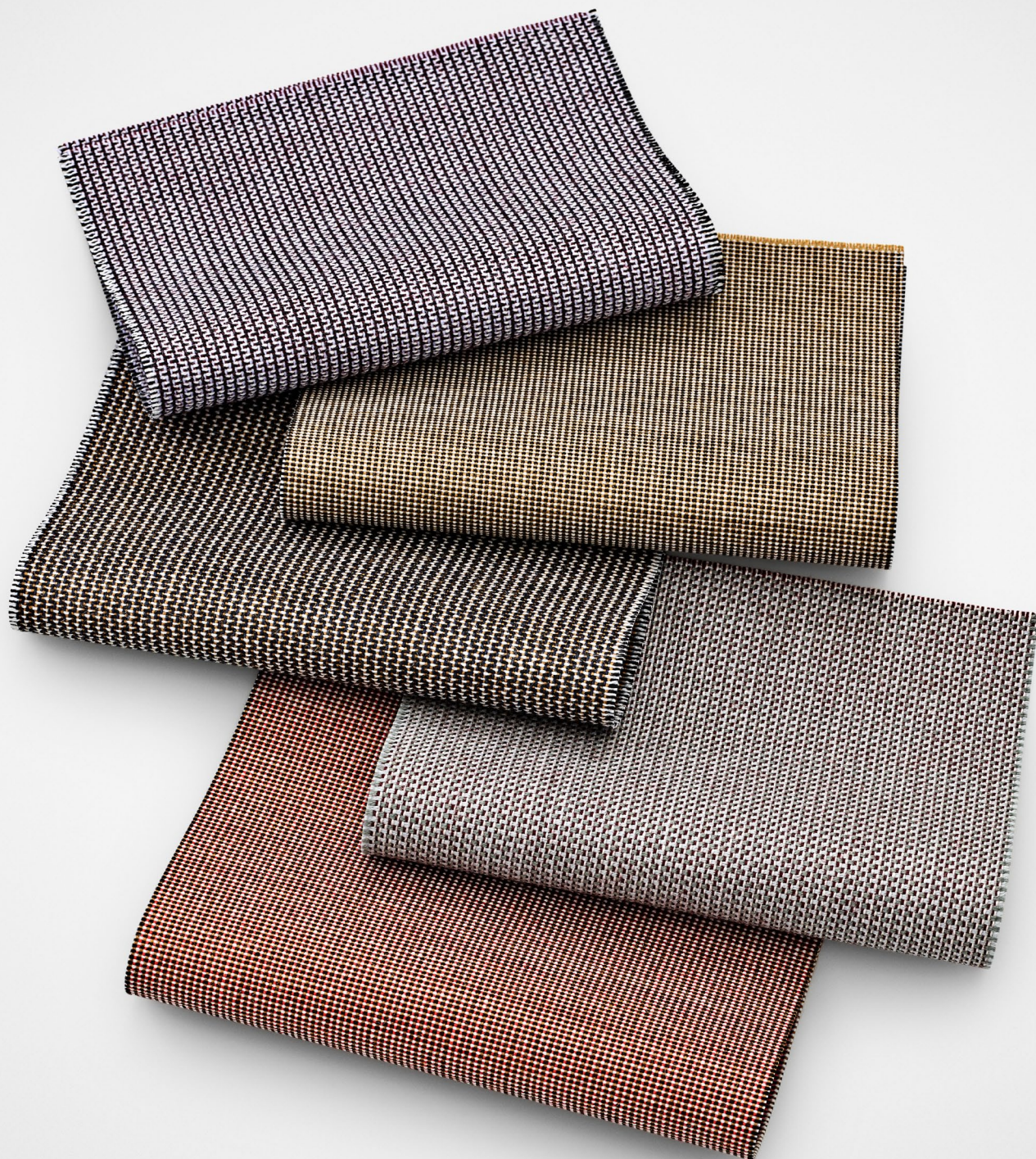


**Umami 1, 2 and 3**  
Louise Sigvardt



**kvadrat**





### **Umami 1**

90% new wool, 10% nylon  
7 colourways  
140cm wide



### **Umami 2**

90% new wool, 10% nylon  
10 colourways  
140cm wide

## **Umami 1, 2 and 3**

*Umami* is a durable upholstery fabric designed by Louise Sigvardt, which comes in three vibrant yet calm expressions.

Named after the fifth primary taste, all the versions of *Umami* are made from wool. Each is constructed with a different weaving method and, as result, has a distinctive surface structure.

*Umami* offers many combination opportunities, as its three expressions combine multiple colours in each colour setting. While the colourways for *Umami* are understated, some feature bold, contrasting tones. These can be emphasised by using complementary colours in the same room.

Louise Sigvardt: *'With Umami I wanted to create textiles, which reflect how we choose a piece of clothing. The colours are inspired by Scandinavian nature and the nuanced palettes of Danish artist Vilhelm Hammershøi.'*

Made from 90% wool, *Umami* is hardwearing. Consequently, it is well-suited to contract use. It also works well in private homes.

### **Umami 1**

*Umami 1* was the starting point for the other two designs. Constructed with a plain weave, it has the most precise, densely woven design. It has a black and a very light grey yarn in the warp and two contrasting colours in the weft.

### **Umami 2**

Constructed with a Panama weave, *Umami 2* is crafted with a light and dark grey yarn in the warp. This gives it a softer, dustier expression than the other two versions.

### **Umami 3**

Like *Umami 1*, *Umami 3* is also made with a black and a light grey yarn in the warp. It is constructed with a Devon binding which creates a rhythmic play of geometric arch shapes across its surface.



**Umami 3**

90% new wool, 10% nylon

8 colourways

140cm wide

**Louise Sigvardt**

A Master of Fashion Design, Louise Sigvardt is a graduate of the acclaimed Kolding Design School in Jutland, Denmark. She creates designs that, *'are based on something recognisable but have details or surprising elements that have a certain edge and a uniqueness.'*

Louise Sigvardt collaborates with companies working across a number of different fields. Her portfolio also includes shoes, bags and jewellery. In 2012 she won the Designer's Nest award at Copenhagen Fashion Week.

For further information, please contact  
[press@kvadrat.org](mailto:press@kvadrat.org)

[www.kvadrat.dk](http://www.kvadrat.dk)